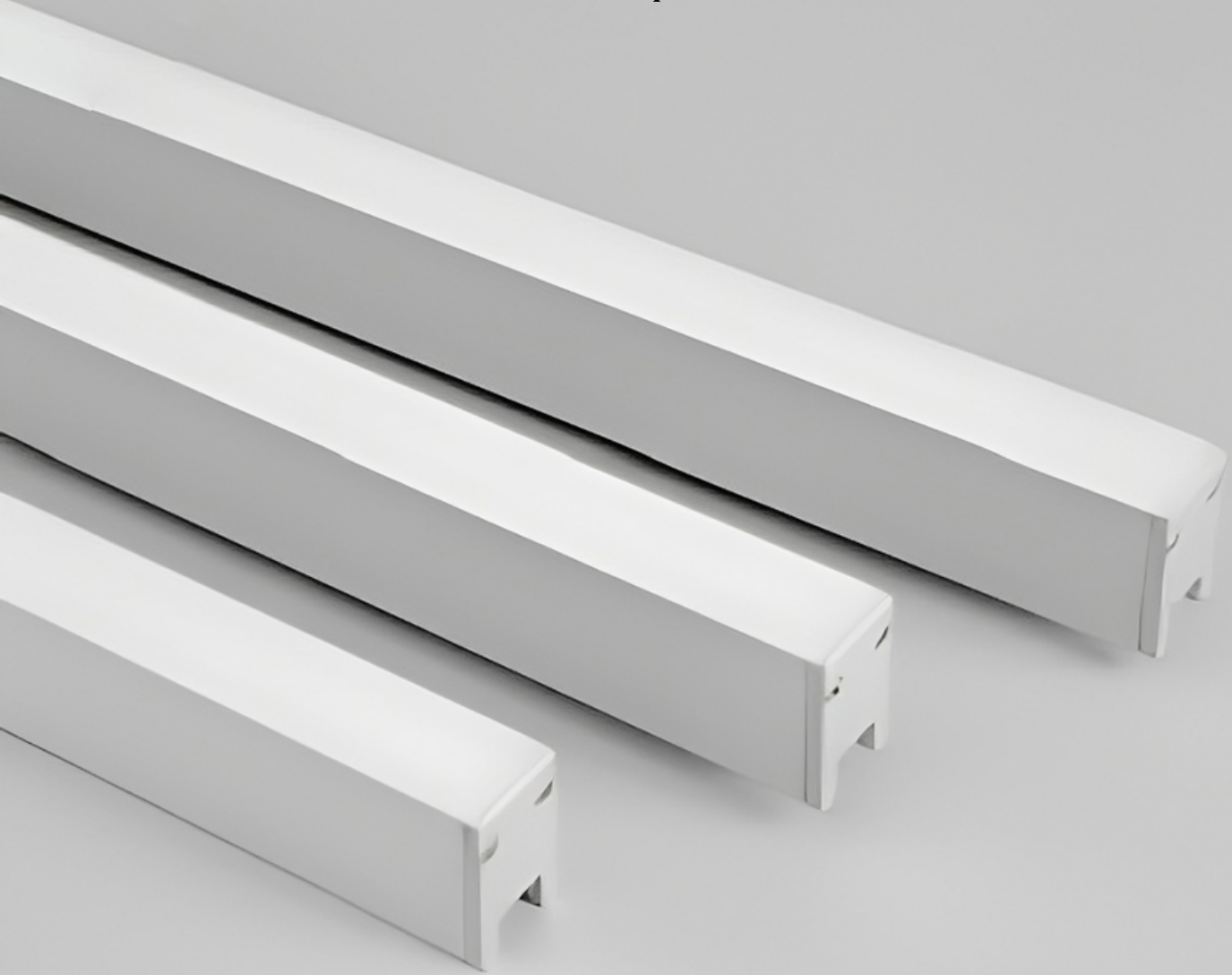


The Liny

Specification Sheet V00



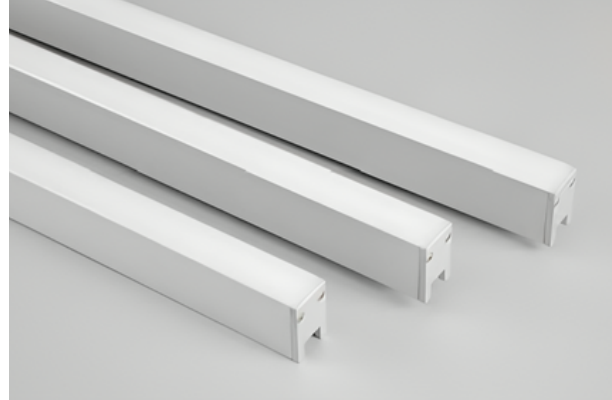
Architectural Collection

kendila

Project: Type: Date:
 Specifier:

Introducing Liny: a stylish, versatile lighting solution. With four beam angles and extendable up to 10 meters, it blends form and function seamlessly.

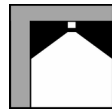
Crafted from durable PU material with a high-quality PMMA lens, it offers optimal light dispersion. Rated IP67 and IK10, it's built to withstand tough conditions



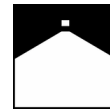
APPLICATION



Wall Grazing



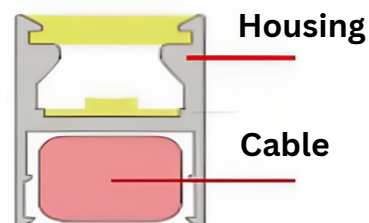
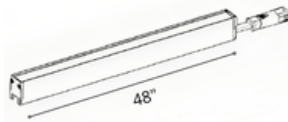
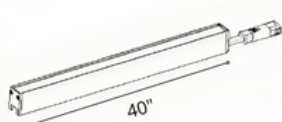
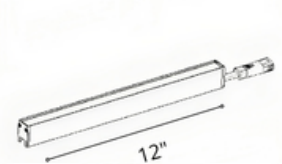
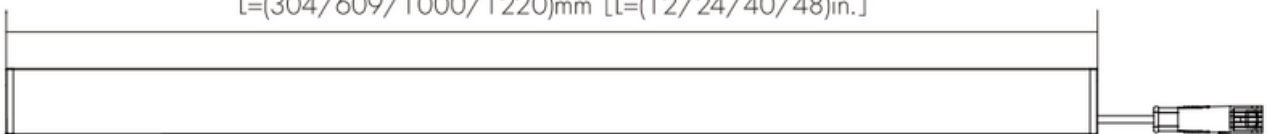
Wall Washing



Diffused Lighting

OVERALL DIMENSIONS

L=(304/609/1000/1220)mm [L=(12/24/40/48)in.]

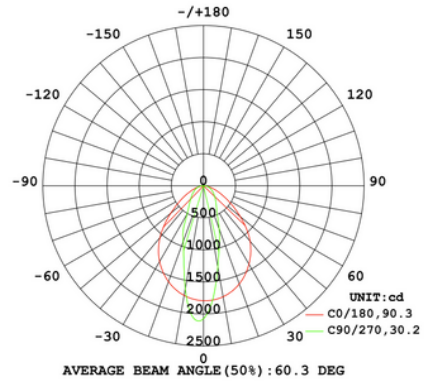
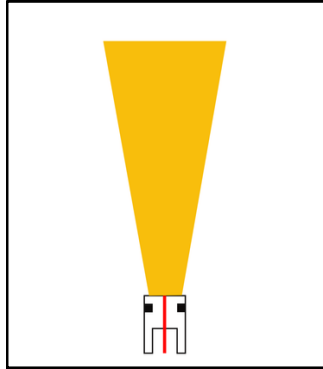


Available in 4 lengths: 12", 24", 40", 48"

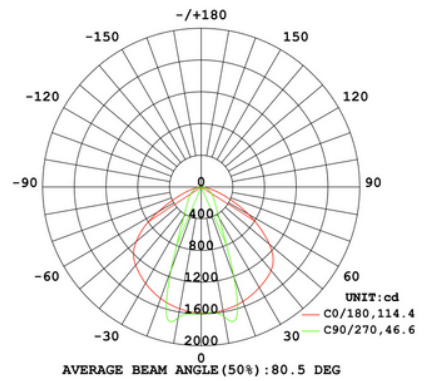
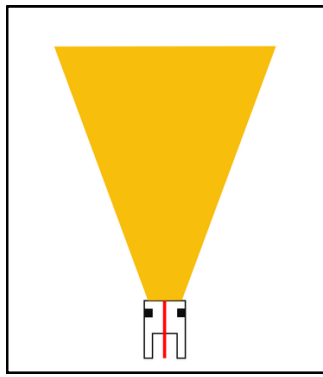
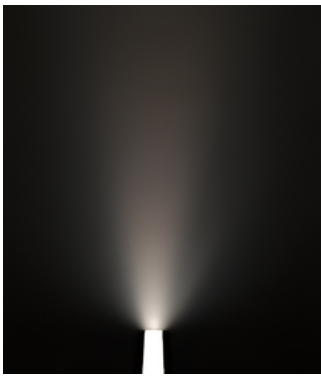
Field Splicing for up to 10meter (32ft) run length with seamless light performance

OPTICAL DISTRIBUTION

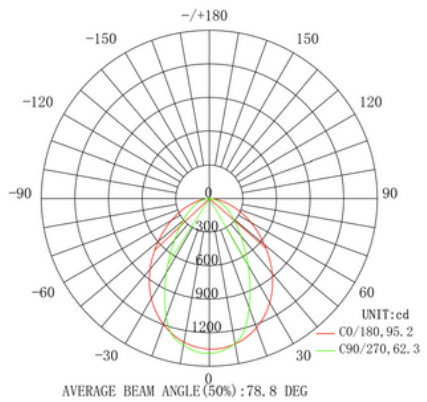
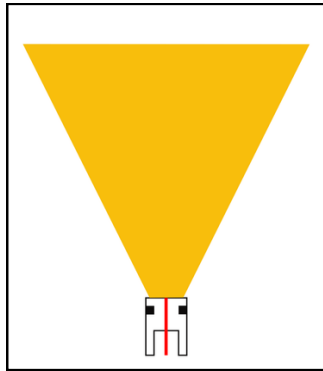
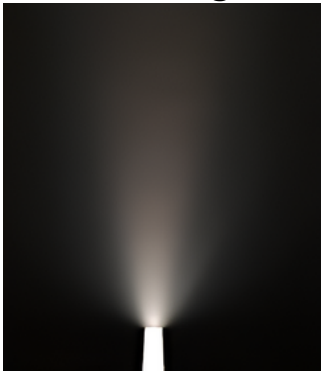
30° Beam Angle



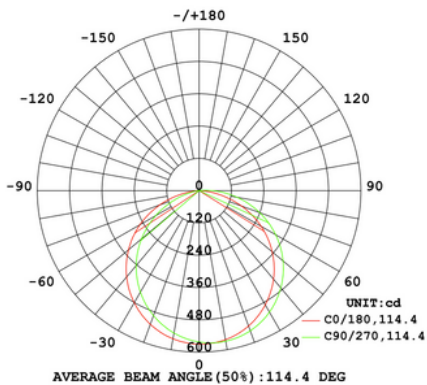
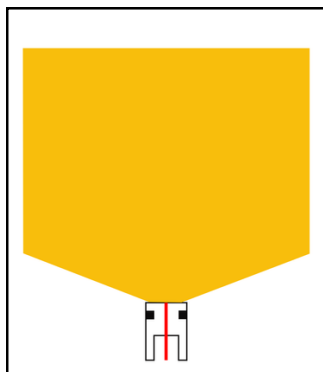
45° Beam Angle



60° Beam Angle

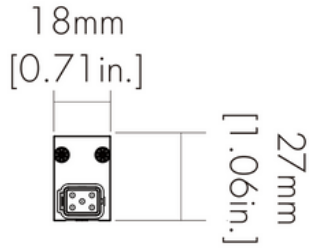


120° Beam Angle



PHYSICAL

Dimensions



Construction

High Precision Aluminium Profile Extrusion

Ingress Protection

IP20

Operating Ambient Temperature

-20°C to 45°C

ELECTRICAL

Input Voltage

DC 24V in Constant Current

Light Source

LED SMD 2835 - 3 STEP 1 BIN

Color Temperature CCT



Color Rendering Index CRI



Safety Information

cULus Listed, CE, RoHS, IP67 (Wet Location), IK10

Installation

CLS - Clip & Screw,
B60 - 60° Bracket
B90 - 90° Bracket
180 - 180° Bracket

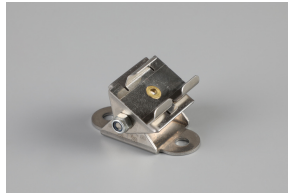
| Lenght | Power Density | Beam Angle | Luminous Flux | Light Efficacy |
|--------|---------------|------------|---------------|----------------|
| 12" | 8W | 30° | 900lm | 113 lm/W |
| | | 45° | 980lm | 123 lm/W |
| | | 60° | 900lm | 113 lm/W |
| | | 120° | 500lm | 63 lm/W |
| 24" | 15W | 30° | 1690lm | 113 lm/W |
| | | 45° | 1840lm | 123 lm/W |
| | | 60° | 1690lm | 113 lm/W |
| | | 120° | 940lm | 63 lm/W |
| 40" | 26W | 30° | 2750lm | 113 lm/W |
| | | 45° | 3170lm | 123 lm/W |
| | | 60° | 2750lm | 113 lm/W |
| | | 120° | 1690lm | 63 lm/W |

| | | | | |
|-----|-----|------|--------|----------|
| 48" | 30W | 30° | 3170lm | 113 lm/W |
| | | 45° | 3670lm | 123 lm/W |
| | | 60° | 3170lm | 113 lm/W |
| | | 120° | 1960lm | 63 lm/W |

ACCESSORIES



Clip & Screw Bracket



60° Bracket



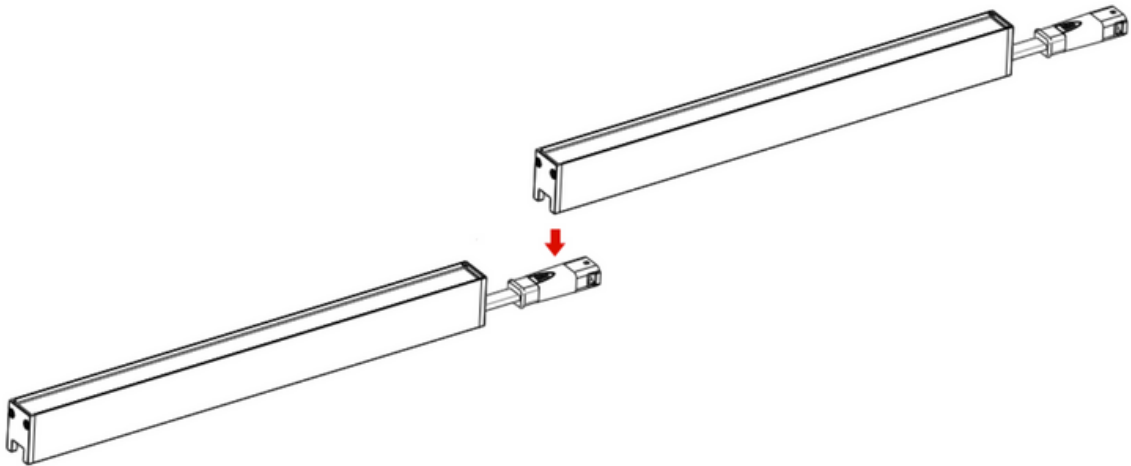
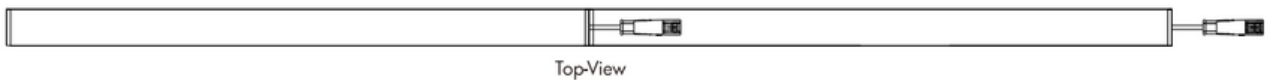
90° Bracket



180° Bracket

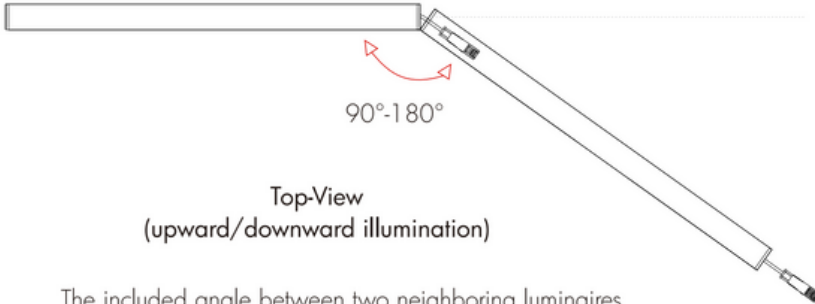
PRODUCT CHARACTERISTICS

The fixture incorporates bottom trunking for securing excess cable during the application of installation accessories and supports daisy chaining for extended lengths

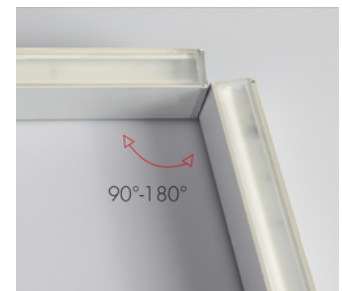
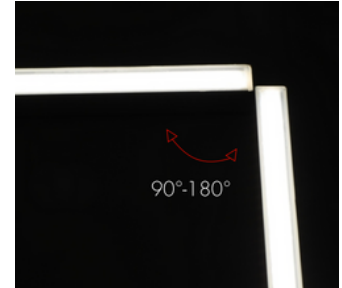


PRODUCT CHARACTERISTICS

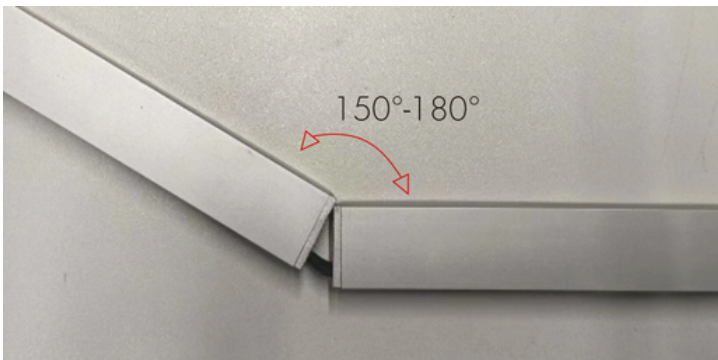
The product offers versatile positioning options facilitated by the extension cable, enabling a top view rotation ranging from 90 to 180 degrees, as well as a side rotation spanning from 150 to 180 degrees



The included angle between two neighboring luminaires is 90°-180° without the use of extension cable. Do not lower angles to avoid placing stress on cable.



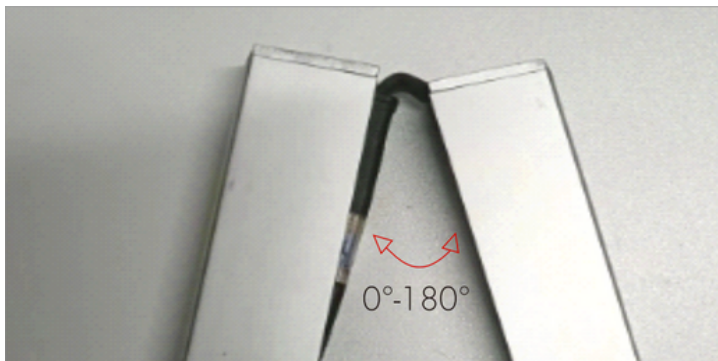
Side-View (Inward illumination)



The included angle between two fixtures ranges from 150 to 180° without the need for an extension cable.

It is advised not to decrease the angle in order to prevent undue stress or potential damage to the cable.

Side-View (Outward illumination)



The included angle between two fixtures ranges from 0 to 180° without the need for an extension cable.

HOW TO SPECIFY

| ARC | LNy | | | | | |
|------------|---------|--------|--------------|-----|-----|------------------|
| Collection | Product | Length | Beam Options | CCT | CRI | Mounting Options |

| | | | | | | |
|----------------------|-------------|------------------|-------------------|---------------------|---------------------|-------------------------------|
| ARC Architectural | LNy Liny | 12 12" | 30 30° | 24K 2400K | S 80+ CRI | CLS Clip & Screw |
| | | 24 24" | 45 45° | 27K 2700K | H 90+ CRI | B60 60° Bracket |
| | | 40 40" | 60 60° | 30K 3000K | | B90 90° Bracket |
| | | 48 48" | 12 120° | 35K 3500K | | 180 180° Bracket |
| | | | | 40K 4000K | | |
| | | | | 50K 5000K | | |
| | | | | 65K 6500K | | |
| | | | | | | |
| | | | | | | |
| | | | | | | |

COMPLIANCE



WARRANTY



INDOOR



OUTDOOR

IMPORTANT NOTES

- Do not install the fixture when power is on. Before powering ON, make sure the wiring is correct.
- Avoid changing or damaging the circuit or other components of the fixture.
- Avoid twist and irregular bend during installation, which might cause non repairable defect.
- Power is fed on one side only, do not feed power on both sides.

kendila

Specification Sheet V00 - Architectural - The Liny



sales@kendila.com



www.kendila.com



+1 514 999 8098