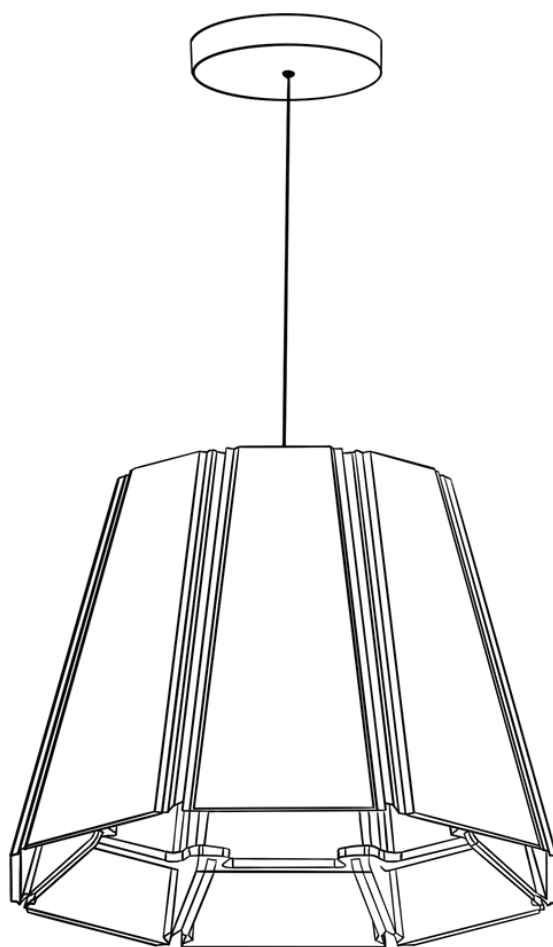


# The Echo

Specification Sheet V00



Project: ..... Type: ..... Date: .....  
 Specifier: .....

The Echo pendant combines contemporary design and functionality with its sleek, four-sided structure. Crafted from premium materials, this versatile statement piece effortlessly transitions from casual to formal settings, embodying a perfect balance of style and innovation.

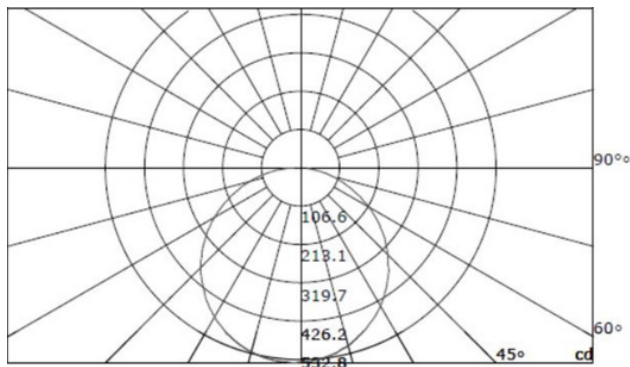


## APPLICATION



Pendant Light

## OPTICAL DISTRIBUTION



Height	Center lx	Diameter
1.m	530.08 lx	312.13cm
2.m	132.52 lx	624.26cm
3.m	58.90 lx	936.39cm
4.m	33.13 lx	1248.52cm
5.m	21.20 lx	1560.65cm
6.m	14.72 lx	1872.78cm
7.m	10.82 lx	2184.92cm
8.m	8.28 lx	2497.05cm
9.m	6.54 lx	2809.18cm
10.m	5.30 lx	3121.31cm
11.m	4.38 lx	3433.44cm
12.m	3.68 lx	3745.57cm
13.m	3.14 lx	4057.70cm
14.m	2.70 lx	4369.83cm
15.m	2.36 lx	4681.96cm
16.m	2.07 lx	4994.09cm

## PHYSICAL

### Material

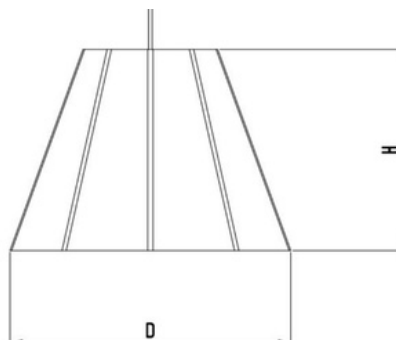
Recycled PET Felt

### Material Thickness

9mm

### Installation

Hardwired



D (in)	H (in)
20	15
37	15

## ELECTRICAL

---

### Input Voltage

AC120-277V

### Color Temperature CCT



### Dimming

0-10V Dimming available

### Light Source

E26 LED Bulb

LED Version available under Premium Tier

### Color Rendering Index CRI



### Total Lumens

- 1200 Lumens

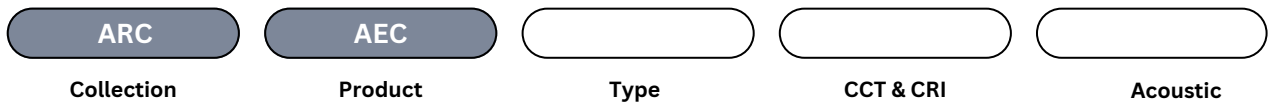
## AVAILABLE FELT FINISHES

---



## HOW TO SPECIFY

---



ARC	AEC	PL	27KH	XXX
Architectural	Acoustic Echo	Pendant	2700K, 90+CRI	Acoustic Finish Code
			<b>30KH</b>	
			3000K, 90+CRI	
			<b>40KH</b>	
			4000K, 90+CRI	
			<b>50KH</b>	
			5000K, 90+CRI	

## COMPLIANCE

---



## WARRANTY

---



## IMPORTANT NOTES

---

Do not install the fixture when power is on. Before powering ON, make sure the wiring is correct. Avoid changing or damaging the circuit or other components of the fixture.

# kendila

Specification Sheet V00 - Architectural - The Echo



[sales@kendila.com](mailto:sales@kendila.com)



[www.kendila.com](http://www.kendila.com)



+1 514 999 8098