

# The Nixy

Installation Sheet V00



Architectural Collection

kendila

## Product Features

---

Please read this manual carefully before installation and use. Please keep it for reference.

### Warm Tips

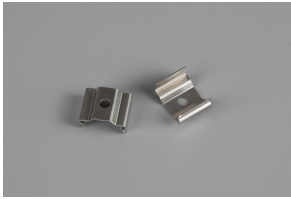
- This product is suitable for indoor use only, and should be kept away from open fire or high-temperature objects. Please install and use it by professional electrical personnel.
- Before installing and using the product, please confirm that the product is not damaged during transportation for timely replacement or return, so as to ensure the legitimate rights and interests of consumers.
- Non professionals are not allowed to disassemble and repair the product. If maintenance is required, please contact our sales person. Our company will not replace or guarantee the product disassembled and repaired without permission.
- Before cleaning the product, please turn off the power and do the cleaning with dry cloth. Please do not clean with chemical or corrosive solvents.

### Installation Note:

- Please install the luminaries by professional electrical personnel to avoid accidents or damage to the product.
- Please handle with care during installation to ensure the best performance of the product.
- If it is not installed following the relevant requirements and regulations in the manual, the manufacturer shall not be responsible for the loss and damage caused.

## Fixing Accessories

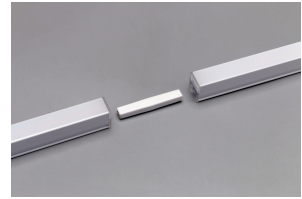
### Clip & Screw Bracket



### Metal Sheet for Magnet



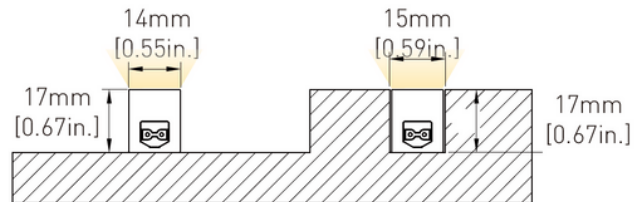
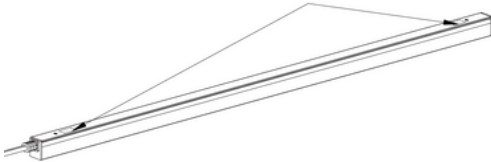
### Extension Connector



## Installation Steps

### Magnet Fixation

Imbedded magnet inside the PC Housing

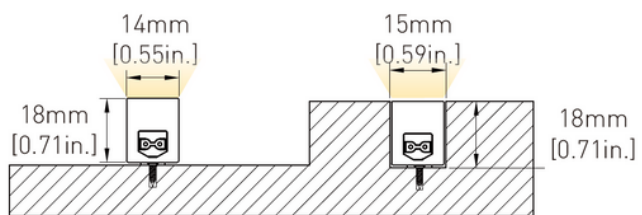
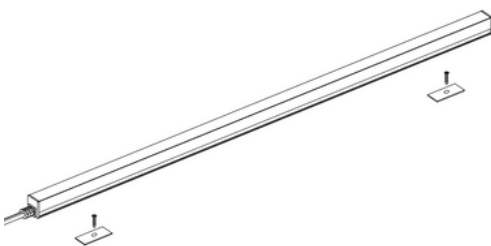


Surface Mounting

Flush Mounting Groove size

The fixture can be mounted easily on a metallic surface

### Magnet Fixation with Metal Sheet



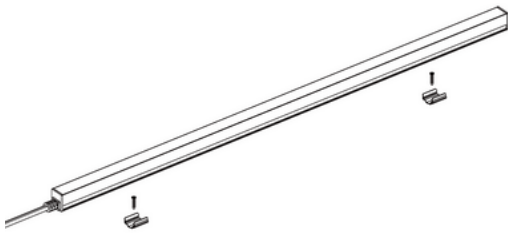
Surface Mounting

Flush Mounting Groove size

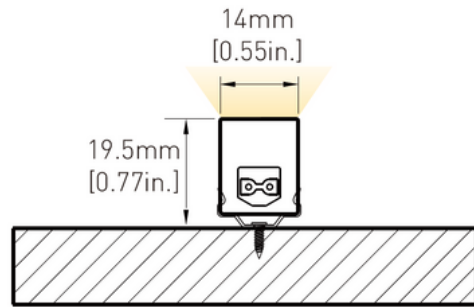
First, secure the metal sheet in place using screws based on the magnet's position, and subsequently attach the product onto the metal sheet

# Installation Steps

## Clip & Screw Bracket

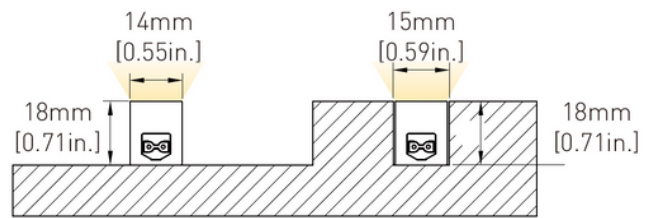
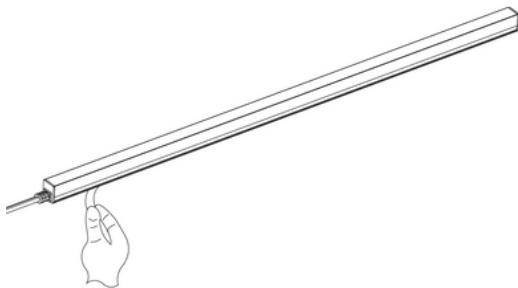


Start by fastening the bracket to the mounting surface using screws, and then securely clip the product into the bracket.



Surface Mounting

## Adhesive Tape Fixation



Surface Mounting

Flush Mounting Groove size

Remove the backing from the adhesive tape, then firmly attach it to the mounting surface

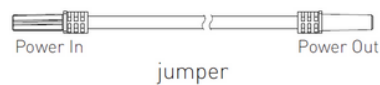
## Connection



120VAC input power cable with AC plug and straight plug linear light extension connector linear light



power cable with AC plug and 90° corner plug



jumper

**Note:**

- To ensure the correct installation, maintenance, and inspection of the product, please entrust electrical and electrician professionals to be responsible.
- Please use it according to the rated voltage marked on the package or product. Do not use it in a too higher or too lower voltage, otherwise, it is easy to cause product failure.
- Before installation, you must first cut off the power supply.
- Do not look directly at the product for a long time when it is illuminating. The powerful light generated by the product may hurt your eyes.
- Do not install the product near the stove, gas, and exhaust funnel to avoid damage.
- Non-professional personnel shall not carry out disassembly and maintenance.

**Pay attention to the following points when installing in all methods**

- Check whether all connectors are connected well and firmly.
- Check that all power cords are connected correctly.
- All the illustrations in the user instruction are diagrams only.

# kendila

Installation Sheet V00 - Architectural - The Nixy



[Sales@kendila.com](mailto:Sales@kendila.com)



[www.kendila.com](http://www.kendila.com)



+1 514 999 8098