

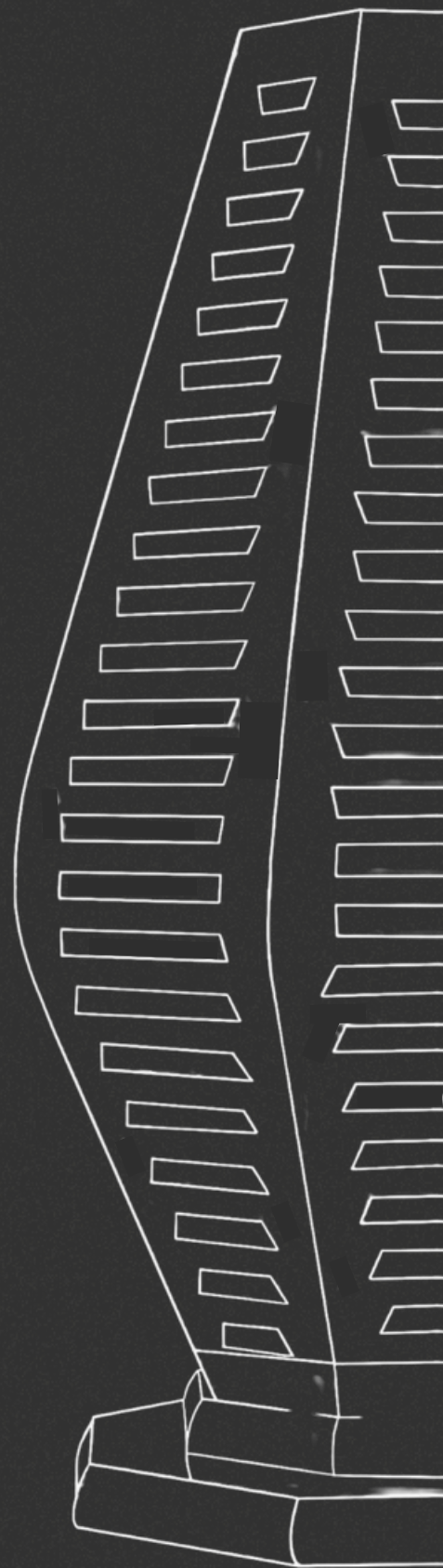
LOUZA

Artisanal Collection

Care & Maintenance



kendila



Care and Maintenance Guide

Introduction

The Louza lighting fixture, crafted from exquisite Thuya Wood, is a true testament to the art of handmade craftsmanship. To preserve its beauty and functionality, it is essential to follow a consistent care routine. This document outlines best practices for cleaning, handling, and maintaining your Louza lamp to ensure it remains a cherished piece in your home for years to come.

Regular Dusting

- **Frequency:** Weekly
- **Materials Needed:** Soft, lint-free microfiber cloth.
- **Method:** Gently wipe the surface to remove dust. Start from the top of the lamp and work your way down to prevent dust from resettling on already cleaned areas.

Avoid Direct Sunlight

- **Impact:** Prolonged exposure to sunlight can lead to discoloration, fading, and cracking of the wood.
- **Solution:** Position the lamp away from direct sunlight or use UV-protective window coverings to shield it from harsh rays.

Polishing

- **Frequency:** Every 6-12 months.
- **Materials Needed:** High-quality wood polish suitable for Thuya Wood.
- **Method:** Apply a small amount of polish to a clean cloth and gently buff the wood, following its natural grain. This enhances the wood's natural luster and provides a protective layer

Electrical Safety

- **Usage:** Ensure the lamp is plugged into a suitable outlet, and avoid overloading circuits.

Cleaning

- **Frequency:** Monthly or as needed for visible dirt.
- **Materials Needed:** Mild wood cleaner, damp cloth, and dry cloth.
- **Method:** Lightly dampen the cloth with the wood cleaner. Wipe the surface gently, following the grain of the wood. Immediately dry with another cloth to avoid moisture damage.
- **Precautions:** Never use harsh chemicals, abrasive sponges, or waterlogged cloths, as they can damage the finish and wood

Humidity Control

- **Recommended Range:** 40-60% relative humidity.
- **Why It Matters:** Thuya Wood is a living material that expands and contracts with humidity changes, leading to potential warping or cracking.
- **Suggestions:** Use a humidifier or dehumidifier in the room where the lamp is located to maintain stable humidity levels.

Handling

- **Best Practices:** Always lift the lamp from its base. Avoid grabbing or pulling on the delicate components, which could lead to misalignment or breakage.
- **Storage:** If storing the lamp, wrap it in a soft cloth and place it in a dry, stable environment to avoid accidental damage.