

The MEDUSA SB & TB

Installation Sheet V00



Architectural Collection

kendila

CONSIDERATION

Please read this manual carefully before installation and use. Please keep it for reference.

Warm Tips

- This product is suitable for indoor and outdoor use, and should be kept away from open fire or high-temperature objects. Please install and use it by professional electrical personnel.
- Before installing and using the product, please confirm that the product is not damaged during transportation for timely replacement or return, so as to ensure the legitimate rights and interests of consumers.
- Non professionals are not allowed to disassemble and repair the product. If maintenance is required, please contact our sales person. Our company will not replace or guarantee the product disassembled and repaired without permission.
- Before cleaning the product, please turn off the power and do the cleaning with dry cloth. Please do not clean with chemical or corrosive solvents.

Installation Note:

- Please install the luminaries by professional electrical personnel to avoid accidents or damage to the product.
- Cut off the power supply before wiring, and a power supply in 24VDC complying with class2 must be used. Please refer to our compatible drivers in the product page.
- Please handle with care during installation to ensure the best performance of the product.
- If it is not installed following the relevant requirements and regulations in the manual, the manufacturer shall not be responsible for the loss and damage caused.

ACCESSORIES



Clip & Screw (Top Bend)



Bracket & Screw (Top Bend)



Aluminium Profile & Clip (Top Bend)



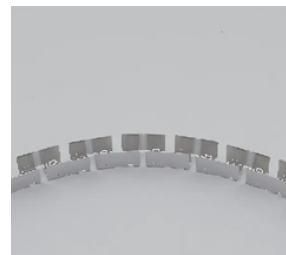
Clip & Screw (Side Bend)



Bracket & Screw (Side Bend)

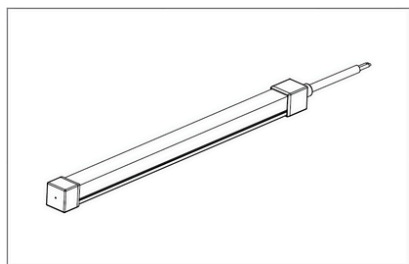


Aluminium Profile (Side Bend)

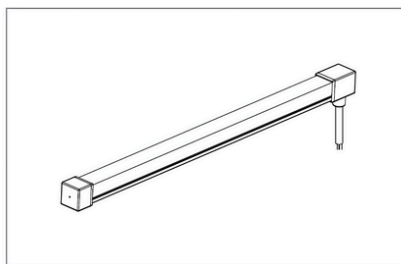


Bendable Profile (Side Bend)

POWER FEED OPTIONS



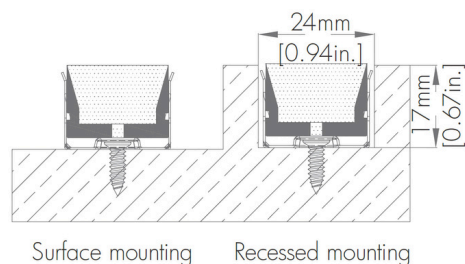
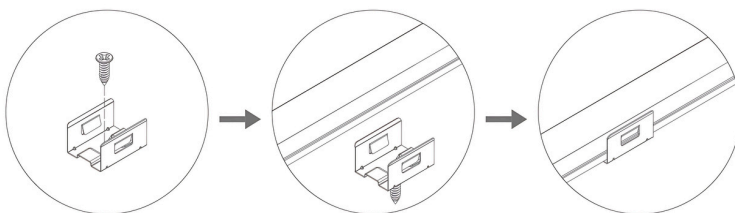
Rear Feed



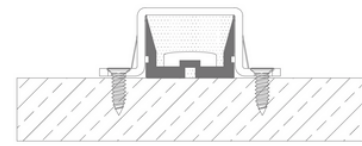
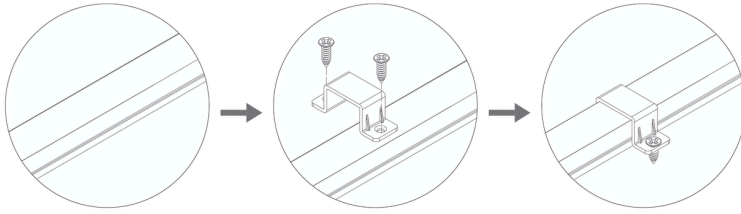
Bottom Feed

FIXATION TYPES - TOP BEND

BKS - Bracket & Screw

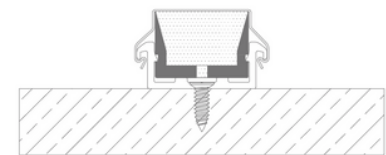
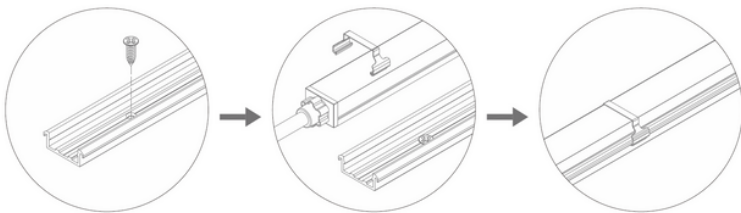


CLS - Clip & Screw



Surface mounting

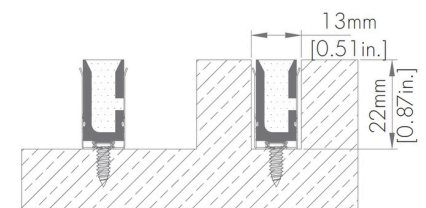
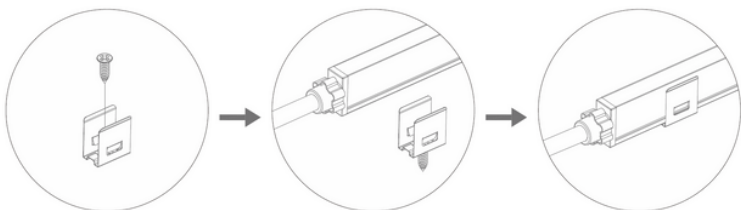
APC - Aluminum Profile + Clip



Surface mounting

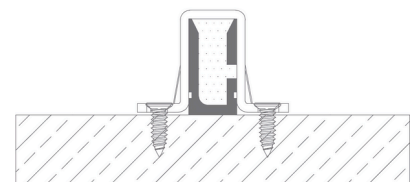
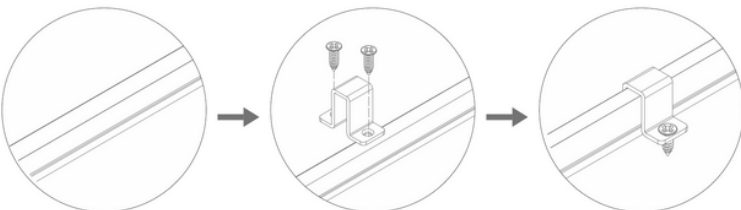
FIXATION TYPES - SIDE BEND

BKS - Bracket & Screw



Surface mounting Recessed mounting

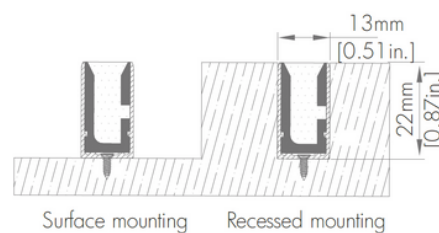
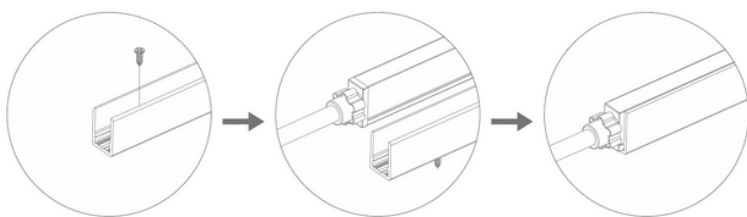
CLS - Clip & Screw



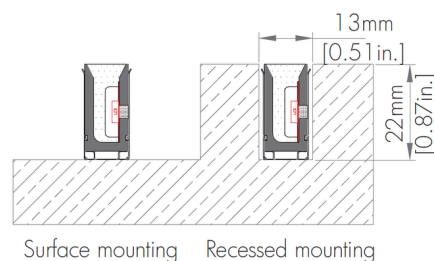
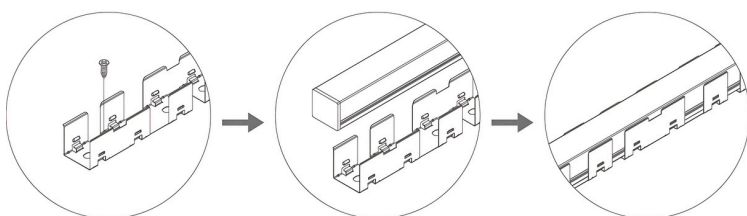
Surface mounting

FIXATION TYPES - SIDE BEND

APR - Aluminum Profile



BBK - Bendable Bracket



Notes:

- Adopt suitable power supply with power is 20% higher than the max. power of luminary, to ensure long time performance of power supply.
- Do not install it when power is on. Before powering on, make sure the wiring is correct.
- Avoid privately changing or damaging the circuit or other component on the luminary.
- Avoid scrape, twist and irregular bend during installation, which might cause non repairable status for the luminary.
- Minimum bending diameter definition is 200mm[7.87in] for Top-Bend and 120mm[4.72in.] for Side-Bend.
- Minimum twist degree is 360° per 1000mm [39.4in.].
- Luminary linked in over long length will lead to problem of overload or uneven brightness.
- To protect your eyes, do not stare at the luminary for a long time while it's illuminated.
- Only professional personnel can install, dismantle and repair.
- Bend and twist diagram is shown as below.

kendila

Specification Sheet V00 - Architectural - The Medusa SB & TB



sales@kendila.com



www.kendila.com



+1 514 999 8098