

kendila

# Mini MEDUSA

Linear Flex Series

Installation. V00

Architectural Collection

[www.kendila.com](http://www.kendila.com)



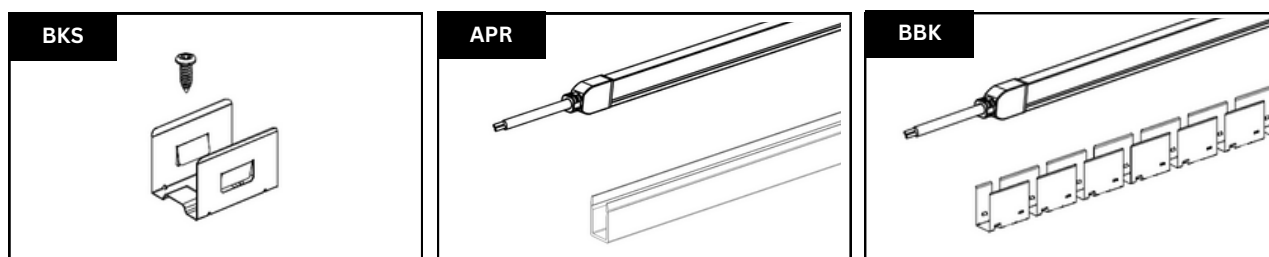
## BEFORE YOU BEGIN

- This product is suitable for indoor and outdoor use, and should be kept away from open fire or high temperature objects. Please install and use it by professionals.
- Before installing and using the product, please confirm that the product is not damaged during transportation for timely replacement or return, so as to ensure the legitimate rights and interests of consumers.
- Non professionals are not allowed to disassemble and repair the product. If maintenance is required, please contact our sales person. Our company will not replace or guarantee the product disassembled and repaired without permission.
- Before cleaning the product, please turn off the power and do the cleaning with dry cloth. Please do not clean with chemical or corrosive solvents.

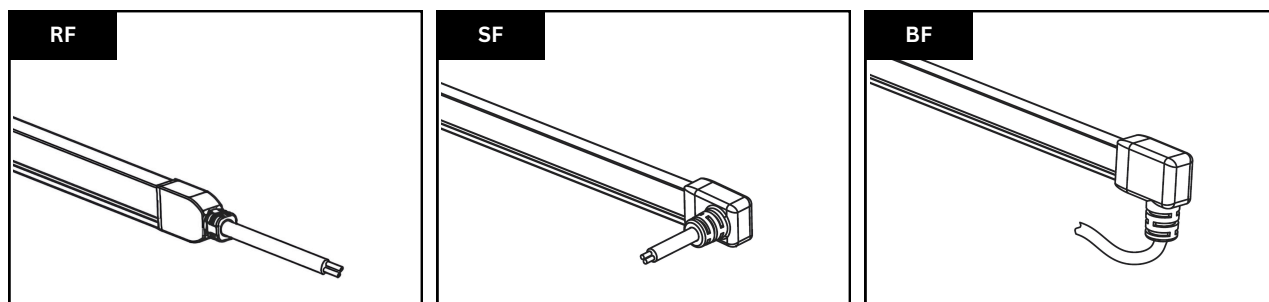
## INSTALLATION NOTES

- Please install the luminaries by professional electrical personnel to avoid accidents or damage to the product.
- Cut off the power supply before wiring, and a power supply in 24VDC complying with class2 must be used.
- Please refer to our compatible drivers in the product page. Please handle with care during installation to ensure the best performance of the product.
- If it is not installed following the relevant requirements and regulations in the manual, the manufacturer shall not be responsible for the loss and damage caused.

## FIXATION ACCESSORIES



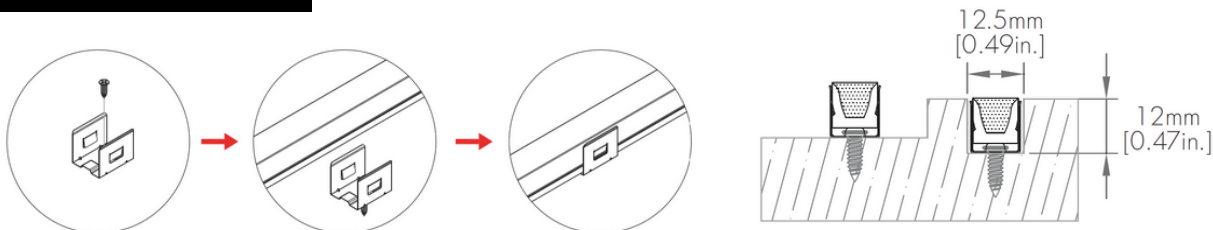
## CABLE FEED



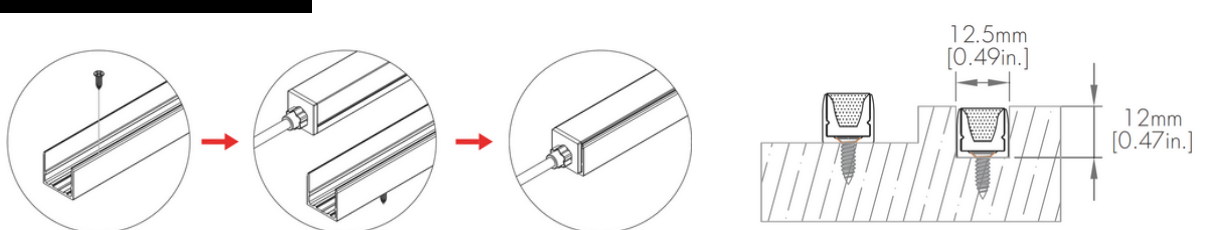


## INSTALLATION STEPS

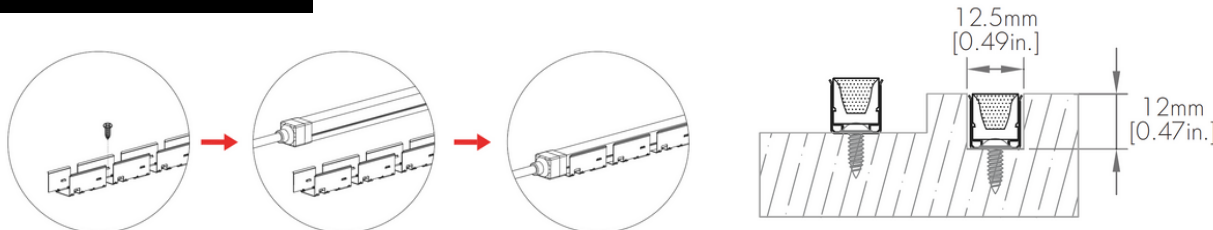
### Bracket & Screw



### Aluminium Profile



### Bendable Bracket



## TERMS & NOTICE

Kendila reserves the right to change the specification, material and colors at any time without notice. Standard warranty terms and conditions apply.

All dimensions and values on specification sheet are nominal.

- K-ISV00-ARC-MEDUSA-MINI-EN : March 2025

## COMPLIANCE & WARRANTY

